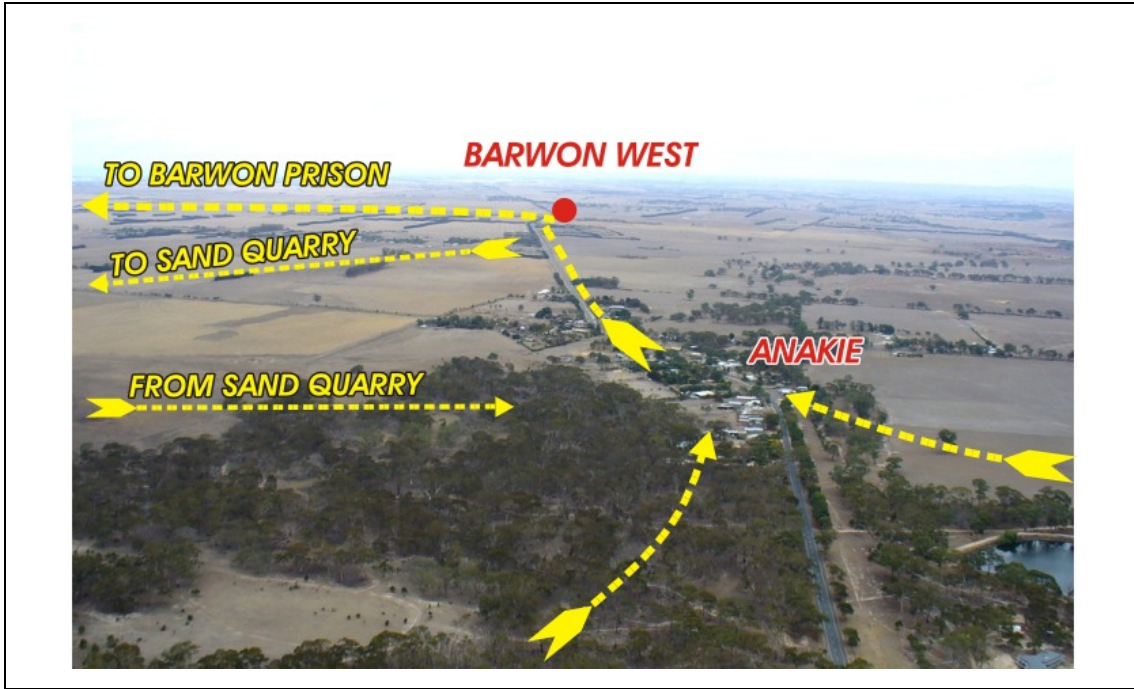


AUSTRALIAN INTERNATIONAL AIRSHOW "AIRSHOW 2007"

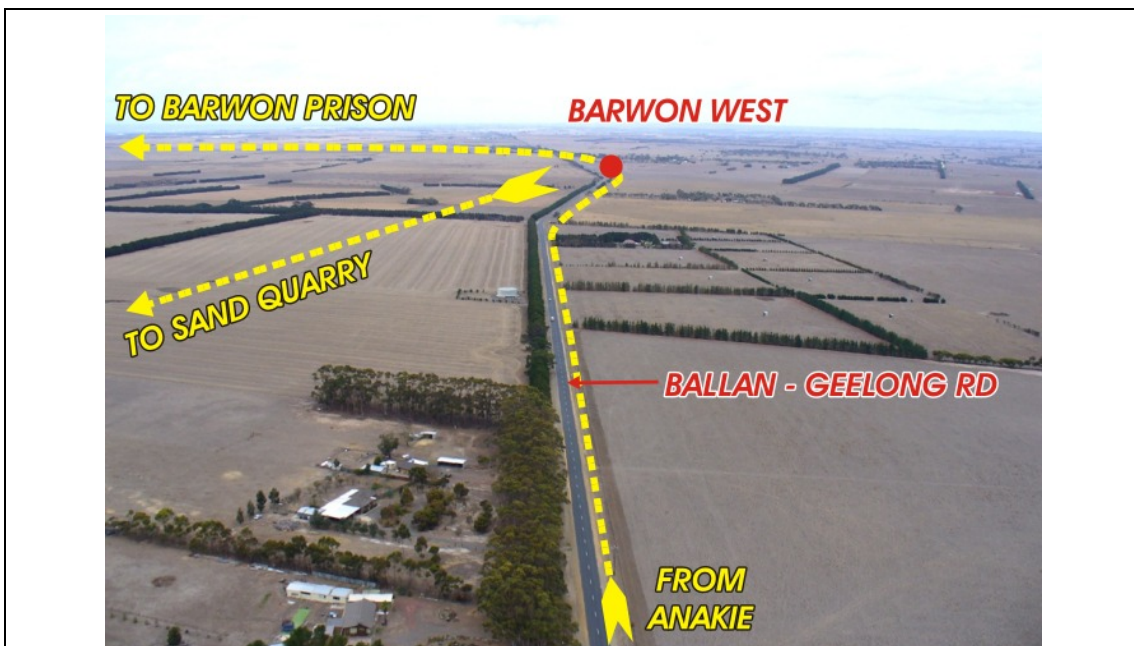
BARWON PRISON ARRIVAL – Entry Point and Holding Area photographs

NOTE: This document must be read in conjunction with AIP Supplement H01/07 and current NOTAM. A thorough understanding of these is essential for all pilots attending or participating in "Airshow 2007".

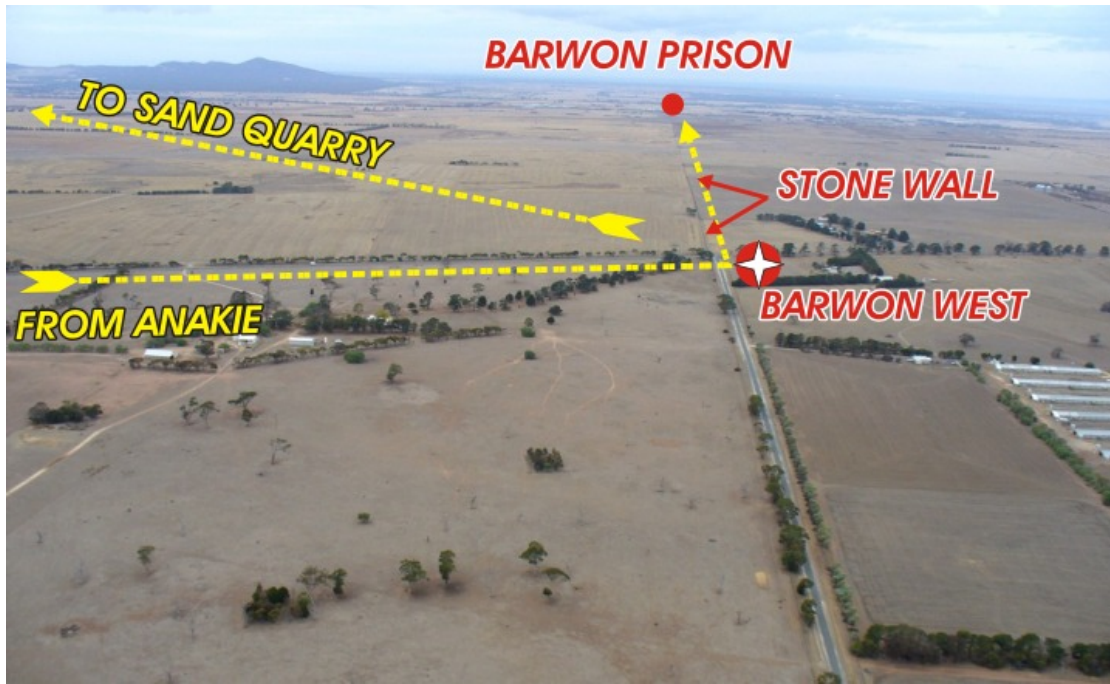
Consistent with other AIP products – unless otherwise stated, all altitudes published in AIP SUP H01/07 are AMSL.



Above: Approaching ANAKIE, looking south down the Ballan – Geelong road to BARWON WEST.



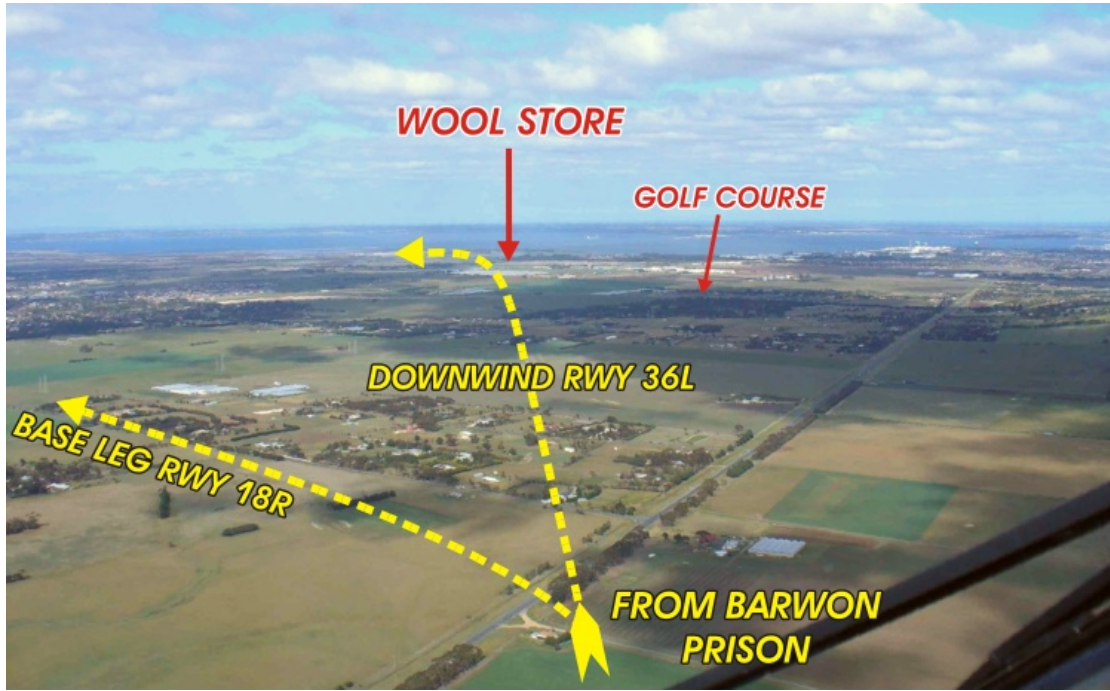
Above: Approaching BARWON WEST (dark patch after kink in road: look for the STROBE light), looking south.



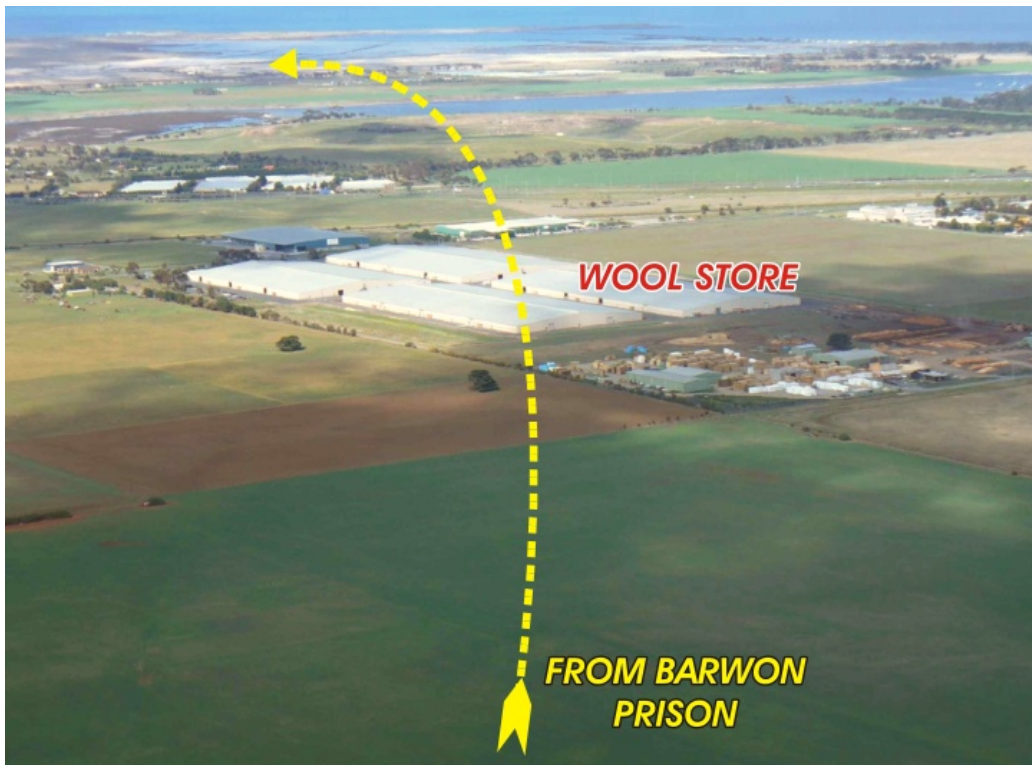
Above: Just west of BARWON WEST, looking east towards BARWON PRISON (BPN). Stone wall leads directly to BPN.



Above: Approaching BARWON PRISON, looking east.



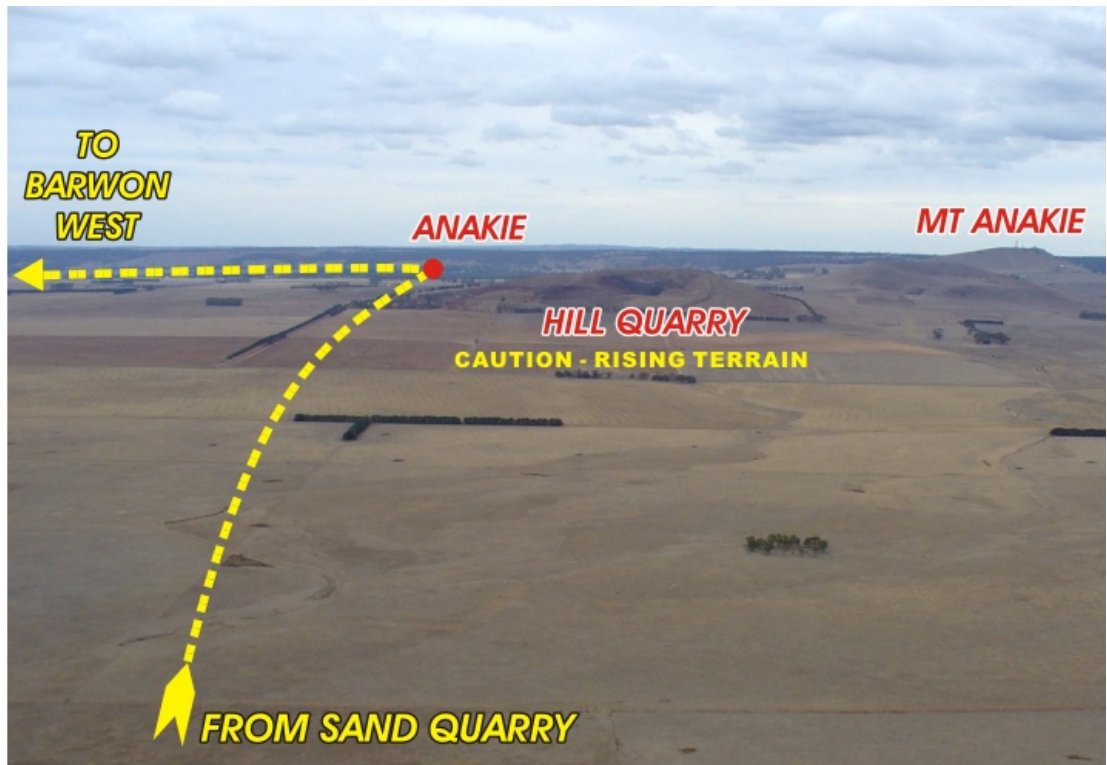
Above: Over BARWON PRISON, looking southeast towards WOOL STORE.



Above: approaching Wool store (left base RWY 36L), looking southeast.



Above: In Barwon Prison Arrival Holding Area at SAND QUARRY, looking west.



Above: In Barwon Prison Arrival Holding Area, looking west on track to ANAKIE.